

ACTIVITY REPORT 2020



2020: A YEAR LIKE NO OTHER

2020 shook the world and COVID-19 changed our lives abruptly. The death of a loved one, isolation and the burden of loneliness became near universal experiences. The health crisis has had an impact on each and every one of us, but most especially on those who were already vulnerable.

To meet the critical needs of community organizations and our international partners, the Mission inclusion team and its peers mobilized like never before to respond. Thanks to the support of our wonderful donors, we have provided a safety net for people living in precarious conditions, innovated in our ways of operating, and deployed actions despite isolation, distance and closed borders.

Adaptation, mobilisation and innovation were the driving forces behind our actions in 2020. Together, we have continued to work for a more just and dignified society. Such is our purpose at Mission inclusion: to work tirelessly for an inclusive world where no one is left behind.

We are thrilled and excited to present our 2020 Activity Report where you can read about the year's highlights and the compelling stories of some of our partners. All of them have fought hard and resourcefully to help vulnerable people as they struggled with the pandemic and lockdown.

If you would like to view the digital version of the activity report, please access it from our website at missioninclusion.ca/publications.

HIGHLIGHTS

The exceptional generosity of our donors allows us to carry out our actions and pursue our mission.

DISCOVER OUR ACTIONS

In Quebec:

111,215 people supported
12 regions, **63** projects
\$1,804,921

COVID-19 Emergency Fund
5 regions, **14** organizations,
31,597 people supported

Abroad:

504,327 people supported
13 countries, **24** projects
\$6,440,594

The Technological Support Fund
11 countries,
21 organizations supported

- **In Quebec**, community organizations are working together, from Montreal to the Gaspé Peninsula, to provide essential services to isolated vulnerable people.

- **COUNTER-ATTACK (RIPOSTES)**: the birth of a new media for and with community organizations.

- **Internationally**, Mission inclusion is working with partners to protect the world's most disadvantaged people from pandemic, famine, climate change and violence. See examples in India, Kenya, Peru and Haiti.

- **On the humanitarian front**, the Foundation continues to assist displaced populations with its local partners. In Burkina Faso, Cameroon, and Nigeria, our humanitarian response is both rapid and sustainable.

- **Innovation and mobilization for food security**: a look back at the achievements of a large-scale project to fight chronic hunger and the effects of climate change in Burkina Faso, Peru and Bolivia.

- **Mission inclusion's financial year has been eventful but sound.**

The unwavering support of donors, funders and our great team has enabled us to work in Quebec and abroad.

Message from the Chairman of the Board, André Dufour

The year 2020 has shaken the world. Despite the turbulence we are still experiencing, I take great pride in the progress Mission inclusion has made.

I never imagined that COVID-19 would have such an impact on our organization. Fortunately, we realized early on that we needed to be prepared to weather the storm! In February, we analyzed the risks and developed contingency plans. In March, we set up an emergency unit, bringing together the management team, the executive director and the director of operations every week. All the while, we were guided by a single goal: to continue our mission on behalf of the most vulnerable.

The management of Mission inclusion consistently kept us informed of the reality on the ground, both in Quebec and abroad. What were the needs of our partners? How could we support them quickly? Together we had to find the best ways to sustain their work. Among many other initiatives undertaken, we created the COVID Emergency Fund, which raised \$146,000. We also revised and reoriented our other budgets to meet the urgent needs of our peers and helped them fight the devastating effects of the pandemic, while allowing them to innovate in their own operations.

Today, I am still impressed by the resilience of vulnerable populations and of our partners in Quebec and around the world. Conflict and climate change have caused hunger and have worsened the situation in Nigeria, Cameroon, Burkina Faso and Mali. In Canada, the daily lives of the homeless have deteriorated, while the suffering and isolation of our seniors have become more apparent than ever. I am always saddened when I think of families who are unable to be with their parents or loved ones at the end of their lives.

Despite all these challenges, we remained steadfast and supportive of community organizations and partners. Everyone redoubled their efforts to provide essential services, protect women and entire families from distress, and help them regain their strength and dignity.

I know there is still a long way to go, but I am confident because I have seen the work and commitment of our teams and partners.

I invite you now to continue reading this report and I hope it fills you with hope as it did me.

**Yours truly,
André**



Message from the Executive Director, Richard Veenstra

It is so very strange to dive back into the early days of 2020.

When we officially announced our name change to Mission inclusion two Octobers ago, I could not have imagined for a second that in 2020, the word “inclusion” would be on everyone’s lips!

Indeed, COVID-19 and confinement, coupled with the shocking deaths of George Floyd and Joyce Echaquan, to name but these two, have brought the issues of inequality and inclusion very much to top of mind.

Mission inclusion saw how COVID-19 caused inequalities to grow in Quebec and abroad, and we took action to counter the trend. We contacted community organizations in Quebec and our international partners right away to re-affirm that we were with them! We created the COVID-19 Emergency Fund and adapted our budgets to the measures required by public health. We funded secured food distribution and mobile clinics, reorganized and renewed support for the elderly and for families and children. Under the radar, hundreds of organizations and thousands of individuals have been working like bees to keep people from hunger, violence, and mental health degradation. They have been witness to so much collateral damage and suffering since lockdown.

To make their voices heard, we set up the COUNTER-ATTACK (*RIPOSTES*), a media platform that brilliantly documents the actions of Quebec’s community sector, which are now so appropriately acknowledged as ESSENTIAL SERVICES.

Despite the chaos, vulnerable populations and our partners have shown tremendous resilience. At the end of the day, the year 2020 also made us progress as a society. The important issues of how we address inequality, racism, and violence against women are being debated more than ever in our society and are finally being considered in a meaningful way, and despite our differences, we have come together in solidarity.

That is what gives me hope. These discussions and that solidarity have the potential to chart our collective course towards a society that upholds the principles of diversity and inclusion.

In closing, I hope that when you read this report, you will remember not only the turmoil of the pandemic but also the reality of an engaged and inclusive world. May these stories inspire you, as they have inspired me, and may they hold and convey the promise of a better future for human dignity.

**Yours truly,
Richard**



IN QUEBEC

In 2020, our lives abruptly changed as the health crisis became all-consuming. In Quebec as elsewhere, the death of a loved one, isolation, and the burden of loneliness became common realities. This crisis, it must be remembered, has had an even more profound effect on those who were already living in precarious conditions. As a result, inequalities are increasing. To meet the urgent needs of community organizations, the entire Mission inclusion team is doubling down on its efforts.

Emergency Fund

COVID-19



Beginning in March 2020, the Foundation created an Emergency Fund with the tremendous support of the McConnell Foundation and our generous donors, for a total of \$146,000 in emergency assistance! Mission inclusion supported 63 Quebec organizations through its regular programs and helped 14 organizations in the province and two international partners.

In Quebec, community organizations doubled down on their resourcefulness to provide essential services and help vulnerable people at the height of the lockdown. Breaking down the isolation of seniors, accompanying street youth in precarious situations, distributing health care supplies... Mission inclusion has been striving to ensure that no one is left behind.

“

Such is the purpose of Mission inclusion: to work for a more just and inclusive society where no one is left behind.

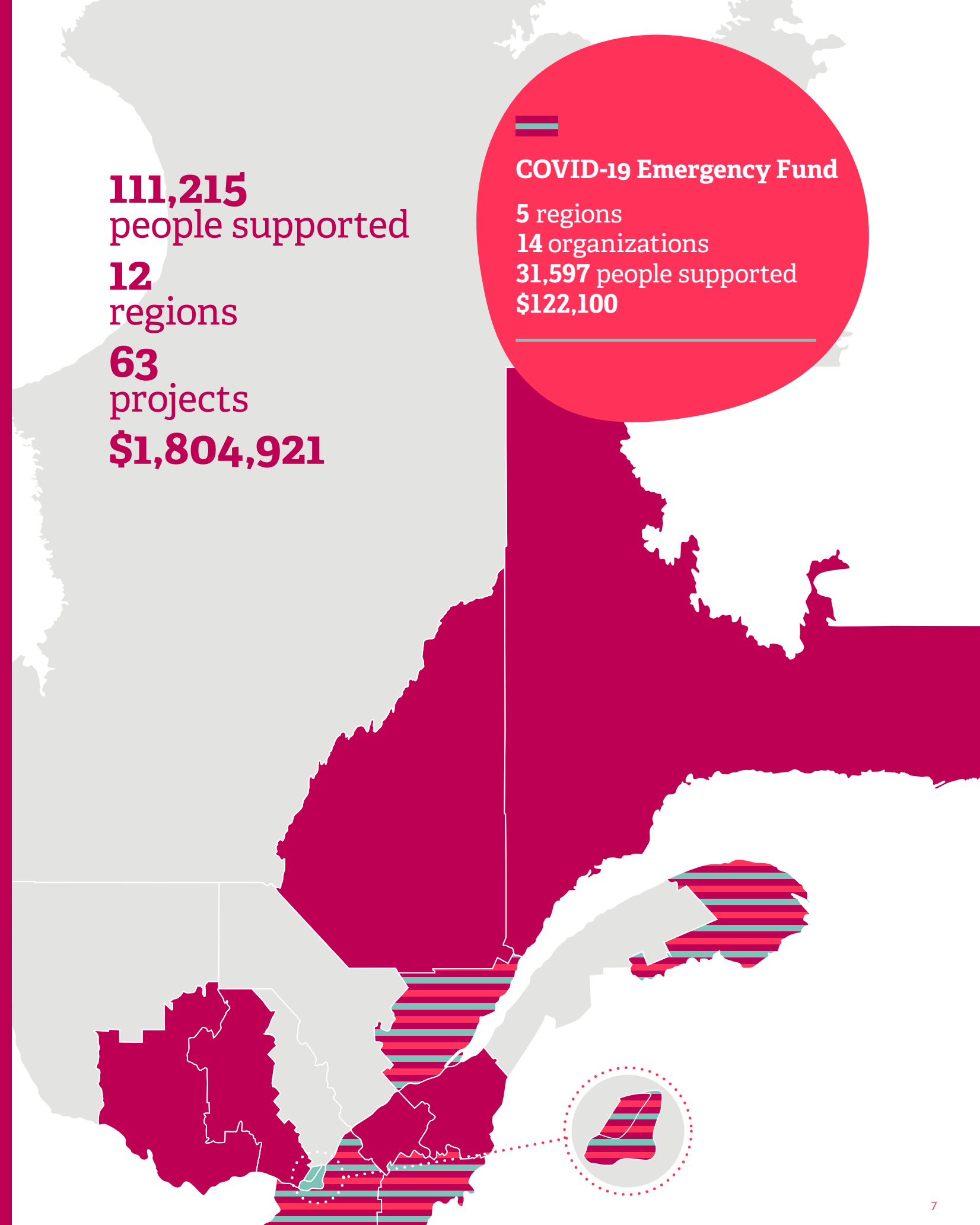
Some amazing stories from our partners in Quebec follow, organizations that have demonstrated unprecedented innovation in the fight against vulnerability.

”

111,215
people supported
12
regions
63
projects
\$1,804,921

COVID-19 Emergency Fund

5 regions
14 organizations
31,597 people supported
\$122,100



CENTRE D'ACTION BÉNÉVOLE DES CHIC-CHOCS IN THE GASPÉ PENINSULA

In Quebec, at the first signs of the pandemic, Mission inclusion provided support to strengthen the safety net the organizations it supports provide. A good example is the emergency assistance provided to the *Centre d'action bénévole* (CAB) (Volunteer action centre) *des Chic-Chocs* in the Upper Gaspé region. In the spring of 2020, the pandemic affected all regions of Quebec and, in the heart of the Gaspé Peninsula, the CAB was caught short. Lacking personnel, volunteers and disinfectant, the CAB was unable to continue its outreach activities with seniors. Mission inclusion provided immediate financial support through the COVID-19 Emergency Fund.

Local solidarity gained momentum in the region and everyone pitched in. The mayor of Sainte-Anne-des-Monts made an appeal to the population on social media to help the Armoire à Vrac in its production of disinfectant. The gastronomic pub La Broue dans l'Toupet offered its facilities for the preparation of food for meals on wheels.

“Without their help, we could not have done anything. We went from twenty meals delivered to 70 per week and on the whole of Haute-Gaspésie territory!” says Geneviève Gagné, Executive Director of the CAB des Chic-Chocs.

To this day, the service has been maintained and the help provided by the CAB has gone far beyond meals on wheels. In the spring of 2020, the organization distributed foodstuffs throughout the entire Upper Gaspé region, which consists of 132 km of coastline. The Center also deployed “treasures of kindness” by providing psychological support to nearly 500 seniors. Without the extraordinary mobilization of volunteers and organizations such as Mission inclusion, such help could not have been offered.

“We can say that the pandemic has had this one good outcome. It accelerated our deployment and created unprecedented bonds of solidarity between all the players in Upper Gaspé,” concluded Geneviève Gagné.

MOBILIZATION OF THE CLINIQUE SPOT IN QUEBEC CITY

Located in Quebec City, the *Clinique SPOT*, whose mission is to improve the health status of people in situations of marginalization, disaffiliation and vulnerability, has been facing major challenges.

“Suddenly, in March 2020, outlets where we used to provide medical care could no longer accommodate us. In one week, we had to stop our dental care and other therapy... What could we do?” ?” says Nathalie Bouchard, general coordinator of the *Clinique SPOT*.

Another major question that arose was: **“With the temporary closure of several community partner agencies, how do we reach people who need care, when they are struggling to keep warm, have access to water and public toilets?”** added Bouchard.

A new community organization made its premises available to the *Clinique SPOT*. Equipped with masks and face shields, the team re-established those close connections. Teletherapy and telemedicine helped provide care.

The phone brigade also went into full swing. From one line to another, peer helpers and young psychology students offered support.

The major innovation was the *Ricochet* project, which supports the psychological and physical health and wellbeing of community workers. Mission inclusion supported this cause and granted \$20,000 from the COVID-19 Emergency Fund to the *Clinique SPOT* in October 2020. Trainings, break times and care were provided.

Preventing burnout and promoting staff retention, increasing the capacity of community organizations to provide basic services, yoga, coaching, physiotherapy, recharging, psychological support, discussion circles, mindfulness - this is what the *Ricochet* project is all about!

“You can’t afford to overlook this, especially when you’re the last line of defence!”concludes Véronique Savard, head of the *Ricochet* project.

In five months, 100 professionals from some 50 organizations have participated in *Ricochet*’s activities. A great success that revealed the extent of the needs.

“We felt it was essential to intervene quickly with community organizations weakened by the pandemic. By activating our Emergency Fund, we wanted to help the CAB des Chic-Chocs to prevent it from being paralyzed and to deploy in an already very isolated region.”

— Danielle Filion, Director of Quebec Programs at Mission inclusion



“Ricochet has been a solution with and for community organizations! The health crisis is putting workers under pressure. Some speak of a “loss of meaning,” while others experience exhaustion. This suffering and distress are amplified in the current context. We must take care of those who take care of us.”

— Véronique Savard, head of the *Ricochet* project



VERT L'HARMONIE IN MONTREAL

Supported by Mission inclusion, *Vert l'Harmonie* is a sustainable development project that promotes the improvement of the local food system and urban agriculture. Environmental education and citizen involvement within the HLM (subsidized housing) La Pépinière in Montreal's Mercier-Ouest neighbourhood are at the heart of the project.

Although the year 2020 began with the promise of festivities to celebrate the 25th anniversary of the *Projet Vert l'Harmonie*, the pandemic decided otherwise. But the members of the team did not let themselves be defeated and reinvented themselves to break isolation and complete the food supply chain for the residents of the HLM *La Pépinière* and of three HLMs for seniors in Mercier-Ouest.

"We are fortunate to have the first greenhouse in a low-income neighborhood in Canada," says executive director Lucie Caillère. "This former parking lot has become an island of fresh air and incredible biodiversity. It is a nourishing and educational garden for the well-being of the residents of the neighborhood" she says.

In 2020, the project was strengthened and took on its full meaning. The crisis exacerbated the food insecurity of vulnerable families and the isolation of residents. Staff members and volunteers mobilized to find new ways of doing things and, above all, to re-empower people in vulnerable situations.

"We reached out to people who came to work in the garden and got involved. Entire families planted vegetables and flowers, with gardeners as well as volunteers from outside the neighborhood lending a hand. Almost 240 people participated in 2020. That's very good," concludes Lucie Caillère.

A real network of mutual aid and sharing was established in the collective garden, which became a place of inclusion and social integration. The green space contributed to the mental health of each and every person in these very isolated environments that low-income neighborhoods can be. Gardening activities were also done by appointment. Training workshops were ongoing and people's attendance increased with time.

Mission inclusion also supported the Community Fridge, which supplemented the diet of families in the HLM. An average of 1,600 frozen meals and 2,320 snacks were distributed in 2020, and 79 families from the HLM *La Pépinière* avoided food insecurity. A success story!

"It feels good, being in the garden. It reminds me of when I am in the country with my grandmother."

— Julien, collective garden participant



COUNTER-ATTACK RIPOSTES



f @PAIRservices / @missioninclusion

THE BIRTH OF A NEW MEDIA FOR AND WITH COMMUNITY ORGANIZATIONS

In the wake of the shockwave released by the lockdown, Quebec community organizations needed to quickly find ways to continue to offer their essential services to vulnerable populations.

As a loyal ally of the Quebec community sector, Mission inclusion, with its partner PAIR (not an acronym, but the French word for peer, an organisation devoted to capacity building within the sector), was pondering the best way to help organizations adapt and respond to the health crisis. The idea of a virtual media platform for exchange and collaboration was born.

How could the public be informed and made aware of the reality of community organizations? How could the community break the isolation and remain united? In April 2020, the Counter-Attack (Ripostes) media platform was born! Launched by PAIR and funded by Mission inclusion, Counter-Attack (Ripostes) has been a unique opportunity for these organizations to make their voices heard through videos posted on social networks and on YouTube. It addresses many issues such as food security, social inclusion, seniors' wellbeing

and many others. Counter-Attack (Ripostes) has supported actors in the field, encouraged innovative practices and highlighted its actions to the general public and donors.

A significant initiative that was born during the pandemic!

"Our participation in Counter-Attack (Ripostes) allowed us to engage young people in very precarious situations who were experiencing many difficulties during the pandemic. The project allowed them to have a space to express themselves and improve their life while breaking their isolation."

Karine Lavoie, Executive Director of *Cirque Hors Piste*

Quebec organizations supported in 2020

Regions	Organizations	Regions	Organizations
Capitale-Nationale	Centre communautaire Jean-Guy Drolet	Montreal	Bouclier d'Athéna Services familiaux
	Centre résidentiel et communautaire Jacques-Cartier		Bouffe-Action de Rosemont
	La Courtepointe		Centre communautaire Jeunesse Unie
	Le Centre Communautaire l'Amitié		Bouffe-Action de Rosemont
	Maison Marie-Frédéric		Centre de ressources et d'action communautaire de La Petite-Patrie
	Mères et monde		Centre de ressources périnatales Autour du bébé
	Ressources Actions Familles à Lac-Saint-Charles		Centre des jeunes l'Escale de Montréal-Nord
Centre-du-Québec	Ressources familiales la vieille caserne de Montmorency		Cirque Hors Piste
	La Piaule Centre du Québec		Clinique Droits Devant
Chaudière-Appalaches	Défi Jeunesse Québec		Cuisine et vie collectives Saint-Roch
	Le FILON		Dans la rue
Côte-Nord	Comité Gendron		Fondation Écho-Logie (Bâtiment 7)
	Transit Sept-Îles		Héberjeune de Parc Extension
Estrie	Auberge sous mon toit		La Dauphinelle
	Cuisines collectives du Haut-Saint-François		La Maison d'Aurore
	Soutien aux familles réfugiées et immigrantes de l'Estrie (SAFRIE)		La Maison des enfants de l'Île de Montréal
Gaspésie	Carrefour Ressources		La Maison des Parents de Bordeaux-Cartierville
	Centre d'action bénévole des Chic-Chocs		La Maison Tangente
	Centre d'action bénévole Gascons-Percé		Le PAS de la rue
	Centre d'action bénévole Saint-Alphonse-Nouvelle		Le Projet Harmonie
	Cuisines collectives Îles-de-la-Madeleine		Les ateliers Speech
Laurentides	Centre d'entraide Racine-Lavoie		Maison Benoît Labre
	Maison Pause-Parent		Projet Ado-Communautaire en Travail de rue (PACT de rue)
	Vigil'Ange		Répît Providence
Laval	Relais Communautaire de Laval		Resto Plateau
	Abri de la Rive-Sud	Outaouais	Santropol Roulant
Montérégie	Centre des femmes du Haut-Richelieu		Sentier Urbain
	Centre de bénévolat Acton Vale	Saguenay-Lac-Saint-Jean	Service d'éducation et de sécurité alimentaire de Mercier-Est (SÉSAME)
	La Popote Roulante de Salaberry-de-Valleyfield		Services bénévoles aux aînés de Ville-Émard/Saint-Paul
	La Tablée des Chefs	Outaouais	Table de concertation sur la faim et le développement social en Outaouais
	L'ABC de la famille		Carrefour Communautaire St-Paul, Secteur Sainte-Thérèse
	Le Groupe d'Entraide Sorel-Tracy (GEST)		
	Maison d'hébergement de dépannage de Valleyfield		

Quebec organizations supported by the COVID-19 Emergency Fund in 2020

Regions	Organizations
Capitale-Nationale	Clinique SPOT
Estrie	L'Auberge sous mon toit
Gaspésie	Carrefour-Ressources
	Centre d'action bénévole des Chic-Chocs
	Centre d'action bénévole Gascons-Percé
	Centre d'action bénévole St-Alphonse-Nouvelle Inc.
Montérégie	Centre d'action bénévole St-Siméon / Port-Daniel
	Maison des enfants Marie-Rose
Montreal	Popote Roulante de Salaberry-de-Valleyfield
	Cuisine collective Hochelaga-Maisonneuve
	Cuisine et vie collectives Saint-Roch
	Le Groupe Communautaire L'Itinéraire
	Mission Exeko
	Regroupement Partage

Learn more about organizations supported across Quebec by viewing our interactive map at missioninclusion.ca/carte-quebec.

Santropol Roulant, Montreal, Quebec



Mission inclusion is proud to witness the impact of the actions we support and we are grateful for the exceptional work of our partners in Quebec and abroad.


Santropol Roulant, Montreal, Quebec



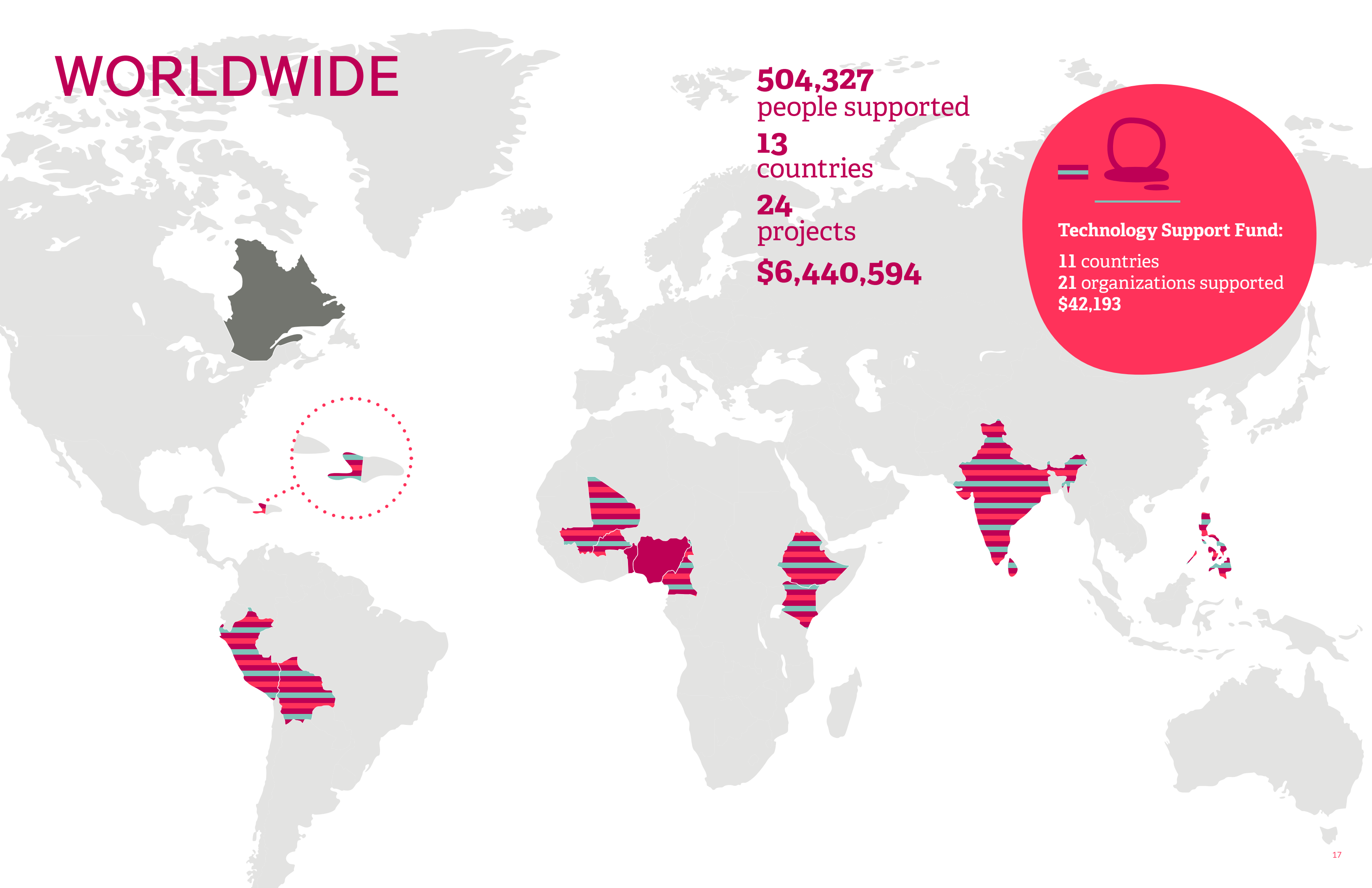
Boussole de la Cité, Sô-Ava commune, Benin

WORLDWIDE

504,327
people supported
13
countries
24
projects
\$6,440,594



Technology Support Fund:
11 countries
21 organizations supported
\$42,193



WORLDWIDE (suite)

As COVID struck, we faced tough questions. How could Mission inclusion continue its international actions despite isolation and closed borders? How could we support vulnerable populations in Africa, Asia, Latin America and the Republic of Haiti when the needs of our partners have increased tenfold?

These questions were crucial, because we knew that our role was to support our partners on the ground and to help them face this unprecedented economic and humanitarian crisis.

In 2020, the Foundation made every effort possible. Adaptation, mobilization and innovation have been our guiding principles. Reallocating financial and human resources, we helped partners to initiate new sanitary measures, to equip and train communities in sustainable agriculture, to protect and defend food rights, and the rights of women and children.



The Technological Support Fund

The Technological Support Fund was quickly designed and made available to international partners to support them in the digital shift imposed by the pandemic. Internet access and the adoption of digital platforms allowed many organizations to continue their activities. Their essential services have been crucial to support the most vulnerable populations.

“

During this challenging and extraordinary year, the Foundation helped 504,327 people internationally, in 13 different countries, with \$6,440,594. Without the solidarity of our allies, donors, and public and private funders, this achievement would never have been possible.

Now let's discover the emblematic stories of some of our partners who fought with spirit and ingenuity to help humankind.

”

International project funding 2020



Partners who received special COVID-19 funds for technological adaptation

Countries	Partners	
LATIN AMERICA		
Bolivia	PRORURAL	
	FCCP	
Haiti	Hôpital Cardinal Léger	
	Institut Fame Pereo/PROSAMI	
Peru	CINDES	
	Generacion	
	SOS FAIM /AGROSALUD	
ASIA		
India	Swayam	
	PRAJWALA	
Philippines	Stairway	
	Kaibigan	
	Childhope	
Sri Lanka	NAFSO	
AFRICA		
Benin	BC-ONG	
Burkina Faso	APIL	
	UGCPA	
	AFDR	
	ATTOUS	
Cameroon	CDD de Maroua-Mokolo	
Nigeria	GEPaDC	
Kenya	Kesho	
Ethiopia	WISE	
Mali	CERFADEL	
	AMPJ	

PRAJWALA, INDIA

For 16 years now, Mission inclusion has supported its partner Prajwala in India to protect and rehabilitate women and children from forced prostitution and sex trafficking. On a daily basis, the organization faces many challenges, but when COVID-19 struck, Prajwala was forced to reassess its operations. As physical contact became limited, trafficking moved on-line and sexual exploitation spread, as sex offenders were taking advantage of the virtual world to exploit children on online platforms.

Faced with this alarming crisis, Prajwala created the virtual series Reality Check to challenge society about the terrible reality of sexual exploitation and to find ways to stop the evolution of this “epidemic”, its effects being compounded by the global pandemic.

How can victims of cybertrafficking be protected? Is the criminal justice system organized to defend victims? Why are victims afraid to go to court? Can the police alone fight this organized crime? The series illuminated these debates in succession. In total, six episodes were broadcasted between September and October 2020.

Bailiffs, prosecutors, jurists, lawyers, police officers, parliamentarians... unprecedented meetings with leading figures were organized.

The series was broadcast on YouTube and was seen by nearly 40,000 people on Facebook. Among the participants were 500 judicial officers, prosecutors, 40 civil society organizations and 100 victims of trafficking.

At the Prajwala Training Center, staff were trained in the use of online media and learned to use virtual meeting applications (Zoom, Skype, Google Meet). Training and education manuals were circulated, as were online courses in bookbinding, welding and carpentry. Women were also made aware of human trafficking and the existing laws on the subject. They escaped from their vulnerable conditions by developing better self-esteem and new skills. This virtual learning helped women to rebuild their lives and move on to a better path.

KESHO, KENYA

In response to the urgency of the crisis, Mission inclusion redirected its funding to its partner Kesho by quickly providing a grant of \$41,000. Thanks to this initiative, 94 extremely poor families received six weekly grants, while 600 families benefited from food baskets and seeds to grow vegetable gardens.

“We were so happy when my parents received money from Kesho Kenya. We bought enough maize seed and fertilizer for planting. Since then, my father has bought me books and other things I need for my studies.”

— Moses Mumba



The ingenious Tippy Tap model was also adopted. This homemade washing station was replicated to limit the spread of the virus. Monique Oliff, a Mission inclusion donor, spread the word about this pedal-powered model that limits the spread of the virus. The Tippy Tap is easy to build from locally available materials and has been used on farms, in families’ homes and in schools. Communities easily replicated the prototype while adopting barrier actions to limit the spread of viruses.



At the shelter, a quarantine center with additional beds was established to accommodate newly rescued victims. People who had contracted the virus received care, and health care workers were trained in protection and distancing measures.

In 2020, 120 women and children were rescued.

“It took us less than 20 minutes to install the Tippy Tap! Now my family and I can wash our hands with running water and soap by turning on the tap with our foot. My kids love it and they clean themselves each time they leave or return to the house.”

— Mwanajuma Said



GENERACIÓN, PERU

Despite socio-economic and health challenges, our partners in Latin America have continued to provide services and training to those most in need. By providing a grant of \$60,000 to *GENERACIÓN*, Mission inclusion has continued to support street youth through its partner. In Lima, the capital of Peru, *GENERACIÓN* faced health risks in offering food, medicine and psychological help to children and young adults.

The association of “street alumni” brings together *GENERACIÓN* volunteers in the four corners of the city of Lima. The distribution of food and psychological support was organized on the ground for about one thousand families. Most of them were vulnerable and single-parent families. The objective was to keep a support link to avoid any relapse.

Adolescents detained in prison were also included. They were given masks and medication and were made aware of barrier measures to be respected. This support was necessary to fight against the effects of isolation and the spread of the virus, which has been very high in prisons.

“I was so relieved when I received medication to treat myself. I realized that I wasn’t alone. That at least I had someone to talk to and turn to.”

— Carlos, Huacho Prison

At the same time, work was being done in two respective shelters, Casa Veronica and Casa San Bartolo. Since about 40 children were residing there, the challenge was to avoid the outbreak of the virus. Staff members increased the number of artistic activities and sports events and provided psychological support. The goal was to provide a way for children to release their stress despite lockdown conditions.

“You know, *GENERACIÓN* is a light in the lives of children and teenagers. For the first time, we gave them the chance to improve their lives and build a better future. And that is priceless!”

— Flavia Meza, psychologist at *GENERACIÓN*



PROSAMI, HAITI

In Haiti, our Maternal and Child Health Project (*PROSAMI*) team has been at the heart of several initiatives to limit the impact of the pandemic on the population.

Upon the arrival of COVID-19, Mission inclusion reallocated some of its funds to support the efforts of the Haitian Ministry of Public Health and Population and health institutions in Léogâne and Gressier to build the capacity of health care teams to respond. In addition, 46,000 people were taught about the risks of COVID-19.

In addition to immediate measures put in place, Global Affairs Canada provided supplemental funding of \$1.4 million to Mission inclusion for a long-term response. This included the establishment of a collection center in Léogâne, increased training and the provision of medical tools.

In addition to the interventions deployed in health institutions, the project team re-launched community awareness campaigns.

At first, a *Sound-Struk* truck with a megaphone fixed on its roof drove throughout Gressier and Léogâne with music and horns to make the population aware of the risks of COVID-19. Motorcyclists spread the same messages to people living in more remote areas. All communication channels were used to raise awareness and encourage communities to protect themselves.

In the second phase of the response, women’s organizations were mobilized. Through their networks, they participated in trainings and activities, strengthened their knowledge of COVID-19, and focused on the prevention of violence against women and girls. Nearly 6,500 people in the communes of Gressier and Léogâne benefited from the project’s actions during the period from April to December 2020.

“The fight against COVID-19 must be a collective effort, a commitment by all citizens. It is in this sense that we have set up *Sound-Struk* as an awareness tool. Indeed, the repetition of the messages promoted a better awareness within the community.”

— Alande, *SOUND-STRUK* owner



HUMANITARIAN ACTION

The health crisis had a profound economic and social impact on populations already struggling in a climate of civil insecurity. They became even more vulnerable and less capable of fulfilling even their most basic needs.

Cameroon

In Cameroon, Mission inclusion supported 110,000 displaced people, thanks to \$1 million in funding from Global Affairs Canada to support rapid and sustainable humanitarian aid. In the face of the pandemic, our local partner, the Diocesan Development Committee of Maroua-Mokolo, provided essential services and protected communities from the virus while continuing its urgent response to the nutrition, health, protection and food security needs of vulnerable families.

Mandatory masking, portable washing stations, and social distancing were some of the protective measures integrated into ongoing humanitarian efforts which promoted access to safe drinking water, combatted malnutrition in children under five and in pregnant and lactating women, and supported farmers in growing food to provide for their families. Free access to basic health care was provided in addition to sexual and reproductive health care.

To support women and girls affected by gender-based violence (domestic violence, forced and early marriage, sexual harassment and violence, etc.), 60 women leaders were trained to raise awareness among 15,570 women and men from different communities about their basic rights and the protection services available to them.

Finally, despite the pandemic, these activities continued to support and strengthen 3,500 vulnerable farmers and producers, and thus allowed them to be more autonomous.

Nigeria

In northeastern Nigeria, the armed group Boko Haram has been disrupting communities and driving them from their land for over a decade. Tens of thousands of families are now living in several camps. There are now more than 1.8 million displaced people. At the same time, the pandemic has increased levels of food insecurity among vulnerable families and children.

Beginning in the spring of 2020, Mission inclusion increased its work with its partner Gender, Equality, Peace and Development Centre (GEPaDC) through generous private donations. Mission inclusion allocated special funding to ensure food supplies for 2,800 extremely poor families.

April 2020 also marked the completion of a major project funded by Unifor’s Social Justice Fund. Eight Women and Girls Safe Spaces were established, each of which housed briquette-making cooperatives. Here, women and children were protected from violence in their communities while being provided an opportunity to earn income and support their families by producing biomass briquettes, a combustible, sustainable and safe source of energy for cooking. This also meant that women no longer needed to leave their camps to search for firewood, thereby avoiding the risks of violence and kidnapping, which are common in the region.

Through the generosity of donors who responded to our appeal, Mission inclusion raised \$70,000 to extend its support to vulnerable families until November 2020.

In February 2021, Mission inclusion and GEPaDC expanded on their commitment to improving the living conditions of displaced families. Through the commercialization of briquettes, cultivation of community gardens equipped with a water source and spinach, sorrel, hibiscus, okra and garlic, the supply and nutritional intake of families was strengthened and new sources of income were created.



“If vulnerable persons are deprived of this type of assistance, they can possibly escape COVID-19, but not famine.”

— Abakar, local leader, commune of Mora

“My family and I use vegetables from the garden to prepare our meals for the week. This was not possible before... We didn’t have the vegetables or the resources to buy them. All of this greatly affected our health. Now it’s over. We have hope and balance in our lives again. “

— Lubabbatu Bulama



INNOVATION AND MOBILIZATION FOR FOOD SECURITY



Mission inclusion and its partners together in the fight against world hunger

Motivated to change the fate of rural families living in a context of extreme poverty and climate insecurity, Mission inclusion and its partners implemented the Innovation and Mobilization for Food Security (IMSA) project. Begun in April 2015 with the financial support of Global Affairs Canada, this project secured on equitable and sustainable access to available natural resources and stimulated the development of agriculture in rural communities in Burkina Faso, Bolivia and Peru until its completion in March 2020.

Throughout the project, emphasis was on training and support for agricultural producers so that they can be more resilient to climate change. In the long term, the food security of thousands of women, men and children has been improved in a sustainable manner. Indeed, indicators of the project show an improvement in living conditions of more than 76,000 people, including 12,500 producers.

Beyond expectations

At the end of the five-year project, all six partners in Burkina Faso, Bolivia, and Peru far exceeded their initial targets, with 13,561 households from hundreds of small rural communities directly supported by IMSA activities, almost double the initial target of 7,000 households.

A total of 9,651 producers increased their production in Burkina Faso (cowpea and sorghum) and Latin America (milk, quinoa, cañahua and vegetables). This is an increase of 138% over the planned 7,000.

Of these, 9,390 producers (34% more than expected) increased their income by more than 30% in five years. The average percentage increase in income per crop was 131% for cowpea, 71.5% for sorghum and 36% for milk.

The achievement of these results is a credit to our partner organizations. Thanks to the quality of their work, their level of participation, and their willingness to improve their knowledge, they were able to reach and accompany the populations in their development.

Thanks to the commitment and dynamism of our partners and local populations, we have every reason to believe that the initiatives deployed by this program, in hundreds of rural communities, will leave lasting changes that will guide transformative actions for these populations in Burkina Faso, Bolivia and Peru.

FIVE YEARS LATER



Burkina Faso: resilience to the challenges of climate change

Through technical initiatives led by our partners APIL, USCCPA and AFDR, the promotion of climate change resilient agricultural practices contributed to the agricultural productivity of 3,000 households. The new Center for the Promotion of Agroecological Practices in Bissiga professionalized endogenous trainers and promoted agroecology, rational livestock breeding and environmental protection. In addition, the construction of 31 wells, 3 drip irrigation systems, 5 pumps and 285 biodigesters improved production.

Bolivia: the relevance of family farming

Led by PRORURAL, technological innovations and new diversification practices were implemented by more than 4,000 producers. Early seeds and irrigation systems almost doubled the production of quinoa and cañahua. In addition, the installation of 600 water catchment systems and market gardening wells made it possible to create 500 bio-intensive agro-ecological family units. Market garden production, traditionally the responsibility of women, increased by 395%.



Peru: the benefits of agro-ecology

Led by CENTRO CINDES, this project aimed to build water reservoirs for crop irrigation and reforestation to mitigate the risks associated with water scarcity for nearly 6,000 producers. The construction of 30 water catchment basins and irrigation systems and 263 barns improved the quality of livestock, and increased milk production as well as cheese and yogurt processing surpluses. In addition, CINDES trained 4,100 people from 69 rural communities to practice agroecology.

Funding Partner:

Canada

Implementing Partners:



PHILANTHROPY

Mission inclusion benefits from the support of not only 4,429 active donors in 2020, but also loyal individuals who have supported us, in some cases, for 20 years on an ongoing basis. It is also companies, corporations and foundations that are committed to the inclusion of the most vulnerable. In 2020, their support has been essential during this extraordinary period.



The McConnell Foundation's gesture

Among the examples of generosity that have touched the entire Mission inclusion team is that of the McConnell Foundation. When the pandemic and the lockdown began, the calls for help never stopped pouring into the Foundation's offices. How do you meet the needs of everyone when there is no time and no resources? On March 30, 2020, the McConnell Foundation sent a message...

"We very much appreciate the work that Mission inclusion is doing to assist some of Montreal's most vulnerable populations. In light of the additional needs that the COVID-19 crisis is creating, I am pleased to advise you that the Board of the McConnell Foundation has approved a grant of \$100,000 to Mission inclusion to support your work over the coming weeks."

— Stephen Huddart, President and Chief Executive Officer of The J.W. McConnell Family Foundation

On that day, Mission inclusion was able to help Quebec organizations and ease the daily lives of thousands of vulnerable people.



Laboratoires Dermo-Cosmetik inc - G.M. Collin, an altruistic family business

A leader in the cosmetic industry, Laboratoires Dermo-Cosmetik inc - G.M. Collin is one of Mission inclusion's strongest allies. Since 2008, the company has supported our initiatives by giving back to women around the world. Helping others is a family vocation. Myriam Sayer, daughter of the executive director, shares her story in a few words:

"When I was little, I was a girl scout and I loved to find ways to help and share with others. When I was older, I did volunteer work, food aid... It was my way of making myself useful," she says.

Today, Myriam and her brother, George, are preparing to take the reins of their father's company. Despite the health crisis affecting the company, their support for Mission inclusion remains intact.



"We had to step up to the plate, to help vulnerable women in Africa, but also in Latin America. It moves me to see Mission inclusion's projects with its partners develop on the ground. We can contribute to the empowerment of women and help them regain control of their lives," concluded Myriam, **"I say yes!"**

MANY THANKS

Mission inclusion would like to thank the individuals, foundations and corporations who have generously contributed to its various actions and by so doing have furthered the cause of social inclusion in Quebec and around the world by making a donation between January 1 and December 31, 2020.

The Foundation salutes its monthly donors

Committed and responsive, monthly donors help us make the world a more just and dignified place. In 2020, many answered the call of the COVID-19 Emergency Fund. Many agreed to increase their monthly donation to help vulnerable populations affected by the pandemic. The scope of their gesture has had a considerable positive impact on organizations in Quebec and abroad.

Thank you for your support!

All of our thoughts go out to those who have left us in this year 2020

Like many of you, Mission inclusion has seen the passing of some incredible, special people in the year 2020. The entire team at the Foundation would like to extend heartfelt regards to the donors, allies and loved ones who have left us. On a daily basis, their commitment and generosity allowed us to work for a better world.



The Foundation acknowledges the invaluable contribution and unwavering support of its donors:

88 donors of \$5,000 or more;

175 donors of \$1,000 or more;

And many donors of \$100.

THANKS TO OUR VOLUNTEERS!

Each year, Mission inclusion is surrounded by volunteers who help make the world a better place. All of you are essential to the functioning and accomplishments of our organization. To you, who work tirelessly to ease the daily lives of those less fortunate, a thousand thanks!

Among those generous people, the Foundation wishes to acknowledge the commitment of its directors.

Board of Directors 2020

Chairman

M^e André Dufour

Vice-Chair

Mr. Louis Roberge

Secretary

Ms. André-Yanne Parent

Treasurer

Mr. Vincent Dostie

Directors

Mr. Louis Bergeron

Mr. Gilles Chevalier

Ms. Amélie Dugas-Sampara

Mr. Jean Éthier

Ms. Dominique Forant

Ms. Laura Fortin

Ms. Andrée Guy

Ms. Diane Hébert

Mr. André Lemaire

Mr. André Nadeau

Mr. Robert Trudeau

Spokesperson for Street Youth:

Mr. Marc-André Coallier



The management also extends a heartfelt thank you to the entire Mission inclusion team for its relentless commitment and dedication to the successful pursuit of our mission.

THE YEAR 2020 IN NUMBERS

Mission inclusion’s fiscal year 2020 was a very eventful one due to the pandemic. But thanks to the unwavering support of our donors, the commitment of our funders, the significant rebound in the stock market and the strength of our team, we have come through.

Tight management of our expenses contributed to good financial results. We have maintained our financial support from partners, and even increased it at times to counter the negative effects of COVID-19.

Ultimately, our financial stability and strength has allowed us to weather this crisis and pursue our mission. The unexpected rebound of the market at the end of 2020 contributed to generating a surplus a surplus of \$4,331,873 which is invested in the capitalization fund whose objective is to ensure the sustainability of the Foundation and to support the long-term financing of programs.

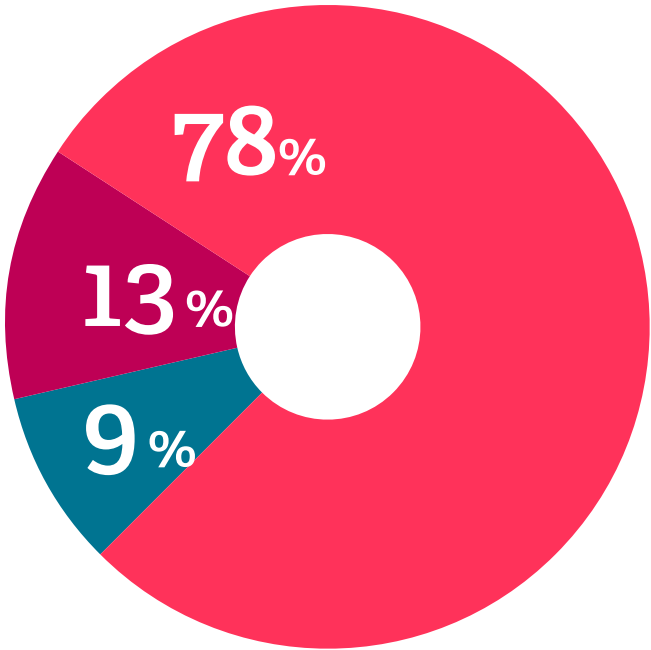


Diocesan Development Committee
of Maroua-Mokolo, Cameroun

Program fund expenditures

- Programming:
\$8,245,515
- Promotion and communications:
\$1,368,355
- Administration:
\$910,086

Total
\$10,523,956



Programmation

- International development:
\$5,101,574
- Quebec:
\$1,804,921
- Humanitarian action:
\$1,339,020

Total
\$8,245,515

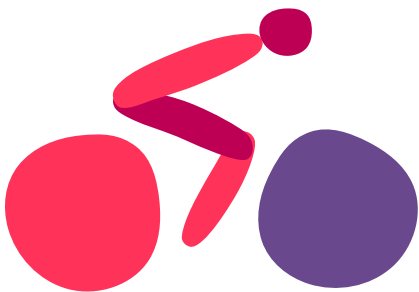
These actions are made possible by the generous donations we receive, government grants, and investment income

- Donations:
\$3,939,472
- Canadian Government:
\$3,911,857
- Investment income:
\$5,607,013
- Quebec Government:
\$98,989

Donations to the COVID-19 Emergency Fund:
744 donations for a total of \$161,486

To view our 2020 Financial Report, please visit our website at missioninclusion.ca/publications.

FUNDRAISING EVENTS



Cycling for Inclusion in 2020

Despite the cancellation of our annual challenge, many of our regular sponsors and partners renewed their support by converting their sponsorship into a donation to Cycling for Inclusion. Thanks to them, Mission inclusion raised a total of \$29,197 for organizations in Quebec and abroad, helping to support people experiencing homelessness, isolated seniors, and underprivileged families and children in need in times of health crisis.

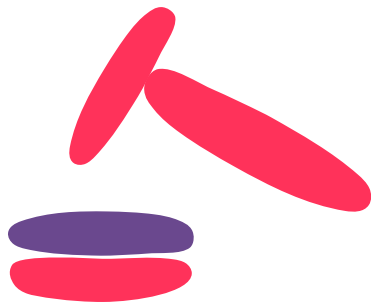
“When the pandemic arrived, it never occurred to us to cancel our fundraising. It was all the more important because the needs were growing and changing,”

— Louis Roberge, vice-chair of the board of Mission inclusion and chair of the Cycling for Inclusion organizing committee.



Bromont Ultra

The Bromont Ultra is a sporting event that invites more than 2,000 participants to run, walk or cycle in support of social causes such as Mission inclusion. Thanks to Mathieu Pagé’s participation, the Foundation received \$3,505, to support vulnerable people.



A first virtual auction

Exceptional circumstances have taken their toll on our annual Golf Tournament. Nevertheless, the organizing committee of the event rolled up its sleeves to launch the first virtual auction. The auction proved to be very popular, as many people joined the solidarity chain of the Mission inclusion virtual auction. A total of \$21,184 was raised. A great success.

THANK YOU TO OUR SPONSORS AND PARTNERS!

Mission inclusion actions are supported by:



Associations/organizations of which Mission inclusion is a member:

- Canadian Association of Gift Planners (CAGP)
- Association of Fundraising Professionals (AFP)
- Association québécoise des organismes de coopération internationale (AQOCI)
- Collectif des fondations québécoises contre les inégalités
- Cooperation Canada
- Fonds d’investissement solidaire international du Québec (FISIQ)
- Minka, Réseau international pour l’agriculture et l’alimentation durable
- PhiLab

Thanks to our sponsors, Mission inclusion organizes fundraising events, and offers the chance to pursue our initiatives for a more just and dignified world. The profits generated are entirely reinvested in the Foundation’s noble causes.

We sincerely thank you for your unwavering support.





130, de l'Épée Avenue
Montreal (Quebec) H2V 3T2
Canada

missioninclusion.ca
bonjour@missioninclusion.ca



Legal Deposit — Bibliothèque et Archives nationales du Québec, 2021
PP 40036970

Mission inclusion is a name used by the Jules and Paul-Émile Foundation.

Registered charity number: 118923689 RR 0001